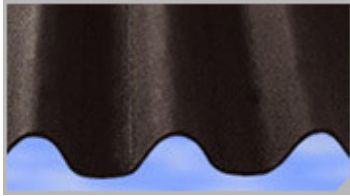


Bitumen Sheet

A) Fiber asphalt KARTONSEC sheets

It is produced with organic bitumen fibers, impregnated and formed under high pressure and temperature. That's why the sheets obtain a great resistance and durability.



SECURITY



The wavy outline of the fiber-bitumen sheet offers a perfect support for tiles and good adherence, avoiding tiles sliding as well as sideways rotations.



VERSATILITY

The use of KARTONSEC fiber-bitumen sheets under tiles can be applied to any type of cover made with every sort of tiles.

DURABLE -

The correct ventilation of the tiles lower cavity assures a greater durability of the cover and its structure.

The sheets wavy outline provides an adequate ventilation to the tiles lower face and drains any type of condensation that may affect the material that the cover is made of.



CONTACTS:

Email : sales@kartonsec.eu

Web Page : www.kartonsec.eu

Tel: +370 (655) 99991

DURABLE -

The correct ventilation of the tiles lower cavity assures a greater durability of the cover and its structure.

The sheets wavy outline provides an adequate ventilation to the tiles lower face and drains any type of condensation that may affect the material that the cover is made of.



PROTECTION -

A roof is already provided by merely placing the sheets so tiles can be laid at a second stage.



THERMIC-

They are made of a powerful insulating material, resistant to frost and snow, since they do not retain humidity.

covered with an aluminium coat they repeal the heat in areas with extremely high temperatures.

k value = 3,2 cal k / m² c.h

CONTACTS:

Email : sales@kartonsec.eu

Web Page : www.kartonsec.eu

Tel: +370 (655) 99991

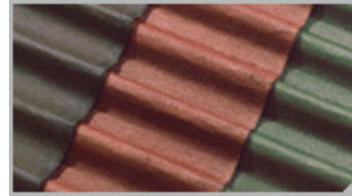
B) Color Fiber KOVERTECH Bitumen Sheet

THERMIC

They are made of a powerful insulating material, resistant to frost and snow, since they do not retain humidity.

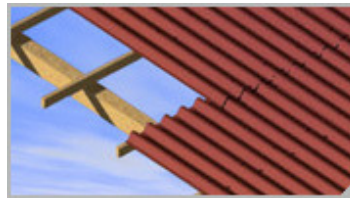
covered with an aluminum coat they repeal the heat in areas with extremely high temperatures.

k value = 3,2 cal k / m² c.h



ECONOMIC

It is an economic material from the very moment it is bought until it is installed and used. Its cost by square meter is cheaper due to its economic structure.



SIMPLE

Fixing the fiber-bitumen sheet requires a simple wooden structure or a level supporting surface and this task can be performed by a single person using hammer and nails. Sheets can also be cut with a saw.



ECOLOGICAL

They are free from asbestos or any other polluting element for the environment. Thus they are not harmful, they do not represent any risk for human and animal health.

It is a product made with vegetal recycled fibers.

CONTACTS:

Email : sales@kartonsec.eu

Web Page : www.kartonsec.eu

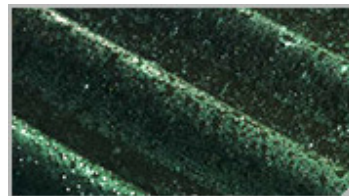
Tel: +370 (655) 99991



DURABLE

The correct ventilation of the tiles lower cavity assures a greater durability of the cover and its structure.

The sheets wavy outline provides an adequate ventilation to the tiles lower face and drains any type of condensation that may affect the material that the cover is made of.



FLEXIBLE

They are flexible and therefore can be adapted to any type of structure. They can be used either for roofing as well as for enclosures.

General Information

Dimensions:	210 x 90 cm
Area brute:	1,89 m ²
Area net:	1,6 m ²
Thickness:	2,5 - 2,6 mm (weigh 4 kg.)
Thickness:	3,4 mm (weigh 6 kg.)
Weight:	4 – 6 kg
Number of waves:	9
Colors:	red, green, brown and black

CONTACTS:

Email : sales@kartonsec.eu

Web Page : www.kartonsec.eu

Tel: +370 (655) 99991